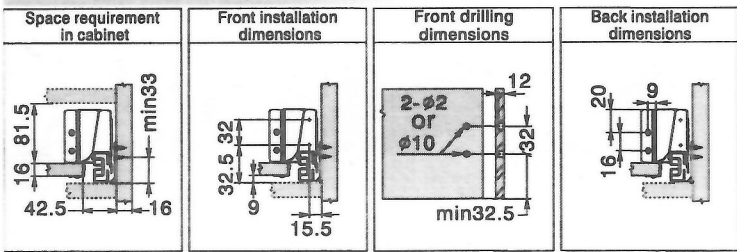
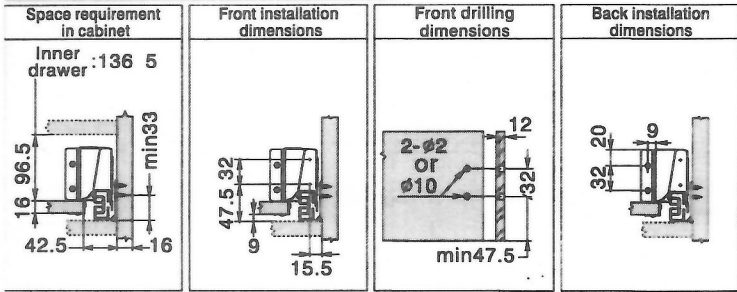


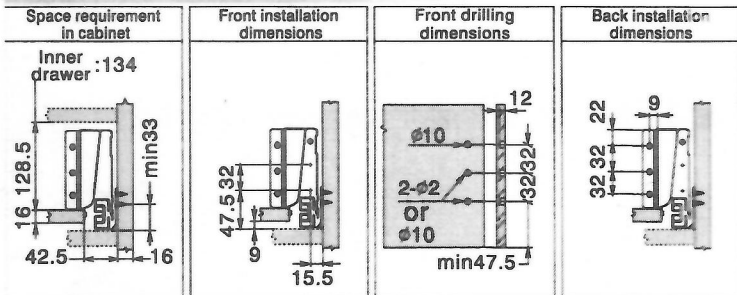
Lower drawer,height N



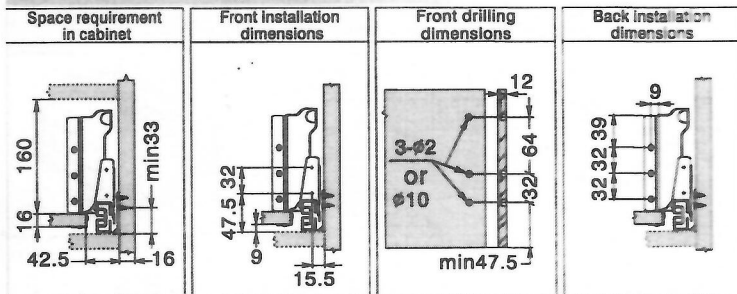
Lower drawer,height M



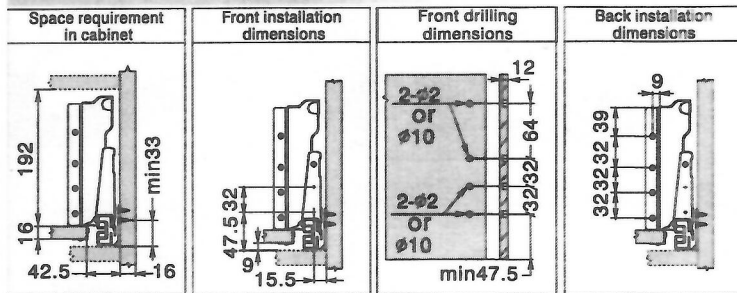
Lower drawer,height K



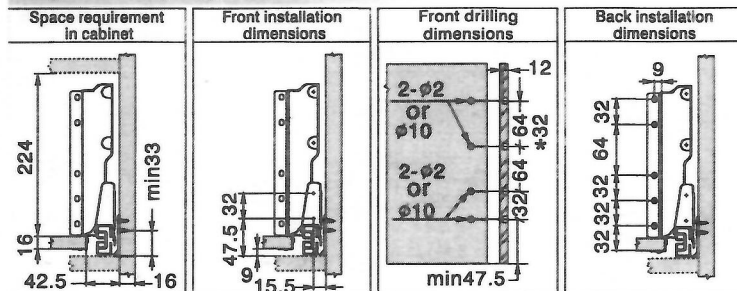
Medium drawer,height B



Medium drawer,height C

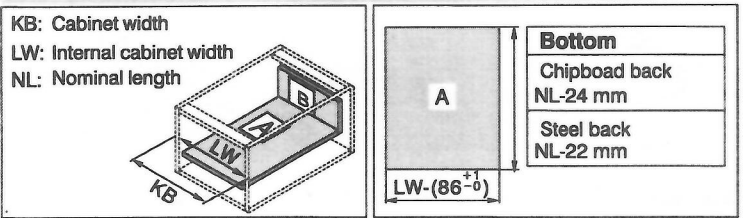


High drawer,height D

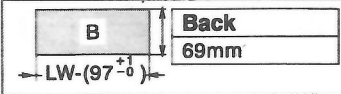


* for Dragon Box Series

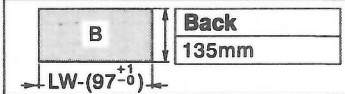
Cutting dimensions for 16mm chipboard



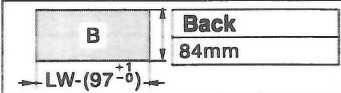
Lower drawer,height N



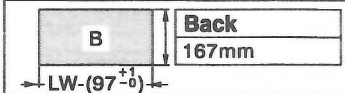
Medium drawer,height B



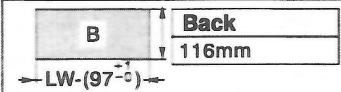
Lower drawer,height M



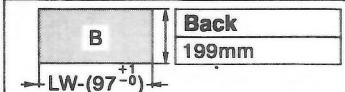
Medium drawer,height C



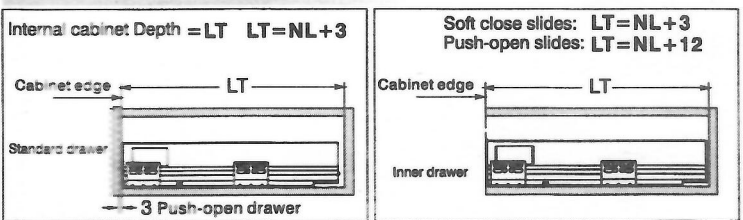
Lower drawer,height K



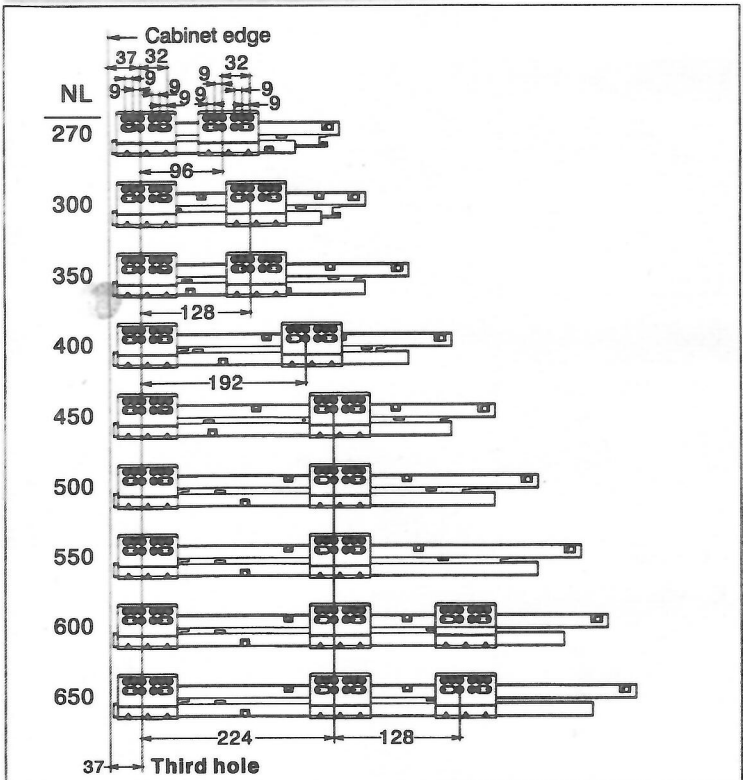
High drawer,height D



Installation dimensions



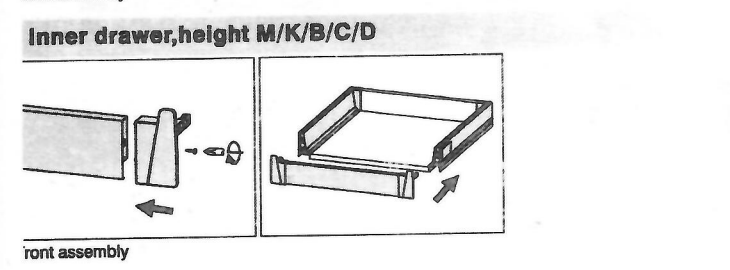
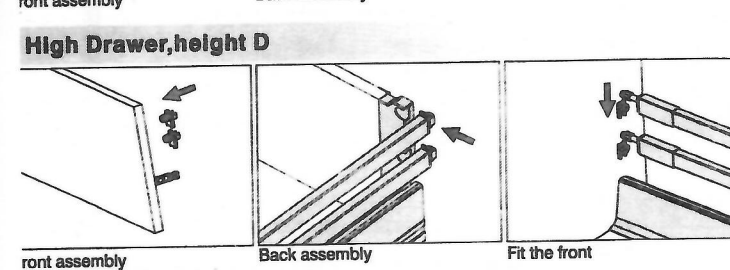
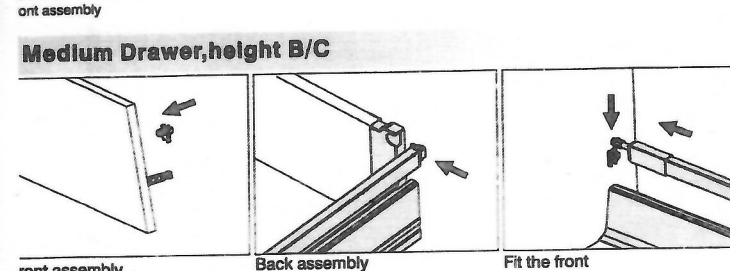
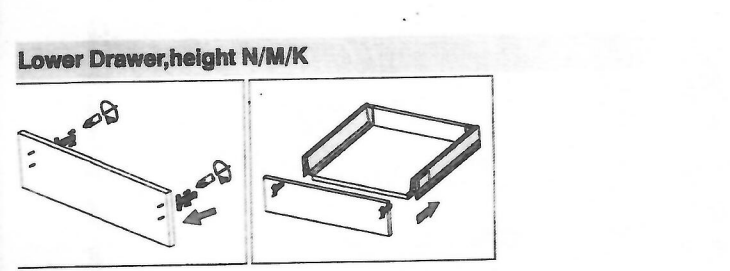
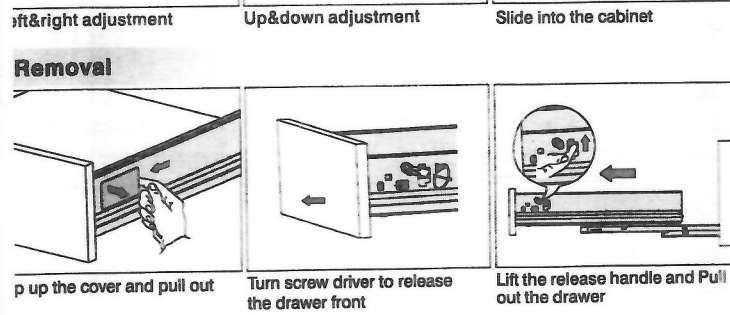
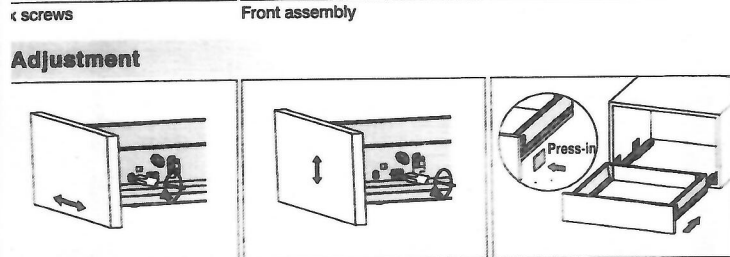
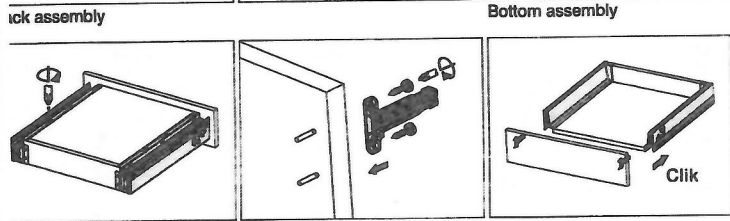
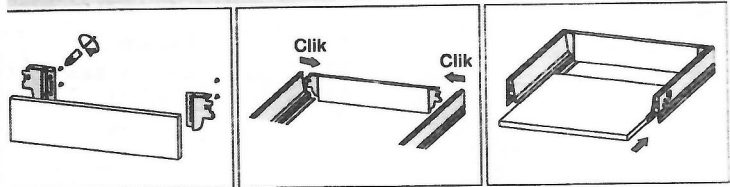
Screw Positions of the Slides



DTC
Global Quality Benchmark

Website:www.dtc.dtc.com

Installation Instruction



Glass-boxside for medium drawer, height B

